

**PHILIPS**

Lighting



INDIA TRADE  
**CATALOGUE**

**2022**





# Contents

**04-13** LED Lamps

**14-19** Wi-Fi LED  
Lights

**20-23** T-Bulb

**24-35** LED Battens

**36-47** LED  
Luminaires

**48-59** Home

**60-65** CFL and  
GLS

**66-71** TL

**72-77** Modular  
Switches

**78-87** Lighting  
Accessories

**88-91** UVC  
Range



# Live life to the fullest

## Philips LED Lamps

LED Lamps



  
EyeComfort  
Technology<sup>®</sup>  
# No Blue Light Hazard



## Ace Saver 2 Star

2.7W, 4W

### Specifications:

- 2.7W: 230 lm, 4W: 350 lm
- Available in CDL and WW; B22 and E27
- Replaces 5W and 8W CFLi

HSN Code: 85395200

MRP: ₹130, ₹135



## Eye Pro 3 Star

5W, 7W, 9W, 10.5W

### Specifications:

- 5W: 525 lm, 7W: 740 lm, 9W: 950 lm, 10.5W: 1050 lm
- Patented interlaced optics technology
- 10,000 life hours
- Available in CDL; B22 and E27

HSN Code: 85395200

MRP: ₹140, ₹155, ₹220

## Ace Saver 2 Star

7W, 9W

### Specifications:

- 7W: 630 lm, 9W: 825 lm
- Available in CDL, WW, B22 & E27

HSN Code: 85395200

MRP: ₹140, ₹155





## StellarBright Super High Wattage

30W, 40W, 50W

### Specifications:

- 30W: 3000 lm, 40W: 4000 lm, 50W: 5000 lm
- 15,000 life hours
- Available in CDL B22 and E27 and WW B22 in 40W
- Replaces 45W, 65W and 80W CFLi

HSN Code: 85395200

MRP: ₹750, ₹1050, ₹1350

## Emergency T-Bulb

10W

### Specifications:

- Power back-up upto 4 hours
- Lumen output becomes upto 50% when on battery mode
- Battery: Li-ion battery
- Base cap: B22
- Better light-spread than normal bulb in Emergency T-Bulb
- 1 year warranty

HSN Code: 85395200

MRP: ₹749



## Emergency T-Beamer

20W

### Specifications:

- Power back-up upto 4 hours
- Lumen output becomes upto 50% when on battery mode
- Battery: Li-ion battery
- Base cap: B22
- Better light-spread than normal bulb in Emergency T-Beamer
- 1 year warranty

HSN Code: 85395200

MRP: ₹899



## Candle

2.7W, 4W

### Specifications:

- 2.7W: 250 lm, 4W: 400 lm
- 10,000 life hours
- Available in CDL, WW, E27, B22 and E14, frosted and clear

HSN Code: 85395200

MRP: ₹160, ₹230



## Deco Candle

0.5W

### Specifications:

- Available in 5 colors
- 0.5W: 250 lm, 4W: 400 lm
- 10,000 life hours
- Available in B22
- Eco-friendly, made of glass

HSN Code: 85395200

MRP: ₹99

## Deco Mini and Joy Vision

0.5W

### Specifications:

- Choose from a Deco Mini B22 variant or a plug and play Joy Vision
- Deco Mini available in 7 colors and Joy Vision in 3 colors
- Use for mandir, puja room, as a night lamp or for decoration purposes

HSN Code: 85395200

MRP: ₹70, ₹150





## Deco Bright

5W

### Specifications:

- 15x more light output compared to Deco Mini
- Extra brightness and choice of colors
- For houses, pandals and shops
- Available in Red, Green, Blue and Yellow light color
- Long life of upto 10,000 hrs
- Base cap : B22

HSN Code: 85395200

MRP: ₹200

## StellarBright Inverter Lamp

8W, 9W, 12W, 18W

### Specifications:

- Power back-up upto 4 hours
- Lumen output becomes upto 50% when on battery mode
- Battery: Li-ion battery
- Base cap: B22
- 1 year warranty

HSN Code: 85395200

MRP: ₹499, ₹549, ₹649, ₹999



## FullGlow Frosted LED Lamp

9W

### Specifications:

- Lumen: 825
- Available in Crystal White-6500K
- Environment-friendly glass material
- ROHS compliant
- High voltage and surge protection
- Fire retardant material
- Base cap: E27

HSN Code: 85395200

MRP: ₹165

## FullGlow Frosted LED Lamp

9W

### Specifications:

- Lumen: 825
- Available in Crystal White and Yellow-6500K
- Environment-friendly glass material
- ROHS compliant
- High voltage and surge protection
- Fire retardant material
- Base cap: B22

HSN Code: 85395200

MRP: ₹165



## FullGlow Clear LED Lamp

9W

### Specifications:

- Lumen: 850
- Available in Crystal White-6500K
- Environment friendly Glass material
- ROHS compliant
- High voltage and surge protection
- Fire retardant material
- Base cap : B22

HSN Code: 85395200

MRP: ₹165

## FullGlow Clear LED Lamp

9W

### Specifications:

- Lumen: 700
- Available in Warm White-2700K
- Environment-friendly glass material
- ROHS compliant
- High voltage and surge protection
- Fire retardant material
- Base cap: B22

HSN Code: 85395200

MRP: ₹165







## G95 LED Lamp

8W

### Specifications:

- Lumen: 600
- Available in Warm White-2700K
- Environment-friendly glass material
- ROHS compliant
- High voltage and surge protection
- Fire retardant material
- Base cap: B22 & E27

HSN Code: 85395200

MRP: ₹249

## Filament LED Lamp

4W

### Specifications:

- Available in Warm White-2700K
- Environment-friendly glass material
- ROHS compliant
- High voltage and surge protection
- Fire retardant material
- Base cap: B22

HSN Code: 85395200

MRP: ₹299



## Filament Bulb

4W, 8W

### Specifications:

- 4W: 350 lm, 8W: 700 lm
- CRI 80
- Environment-friendly glass material
- Power factor: > 0.5
- Surge protection upto 2.5 kV
- Base cap: E27

HSN Code: 85395200

MRP: ₹249, ₹349

## Filament Bulb

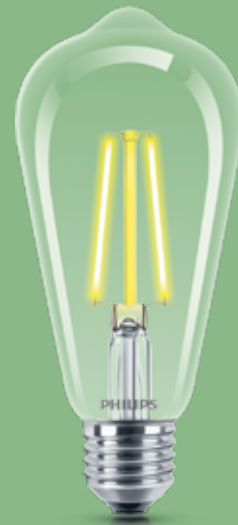
4W, 8W

### Specifications:

- 4W: 350 lm, 8W: 700 lm
- CRI 80
- Environment-friendly glass material
- Power factor: > 0.5
- Surge protection upto 2.5 kV
- Base cap: E27

HSN Code: 85395200

MRP: ₹299, ₹399



## Filament Bulb

4W, 8W

### Specifications:

- 4W: 350 lm, 8W: 600 lm
- Upto 90% energy saving
- Power factor: > 0.5
- Environment-friendly glass material
- Surge protection upto 2.5 kV
- Base cap: E27
- Color: Amber

HSN Code: 85395200

MRP: ₹299, ₹399

## Filament Candle

4W

### Specifications:

- 4W: 350 lm
- Power factor: > 0.5
- Environment-friendly glass material
- Surge protection upto 2.5 kV
- Base cap: E14

HSN Code: 85395200

MRP: ₹249

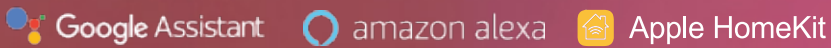




# Smart lighting made easy

## Philips Wi-Fi LED Lights

Works with:



Wi-Fi LED Lights



# No Blue Light Hazard

# Smart Lighting made simple

## Philips Smart Wi-Fi LED Lights



Privacy guaranteed



Multi-user, multi-location



Control anywhere



Schedules



WIZ App

No need to go from room to room to turn your lights off. With LED smart bulbs you can do it from anywhere using the free, easy-to-use app.



Voice control

Control some of your smart bulbs with the sound of your voice. Compatible with most voice-activated devices from Amazon and Google, smart bulbs put you in control.



Tunable white/yellow

Choose tunable white for light that tunes from warm to cool and dims. Tune to cool, energizing light to start a busy day or ease into the evening with soft warm dimmable light. Use your app or voice to comfortably light your routines throughout the day with tunable white.



Circadian rhythm

Automate your lights with circadian rhythm to wake you up, welcome you home from work or help you drift off to sleep. Set timers and schedules to suit your need.



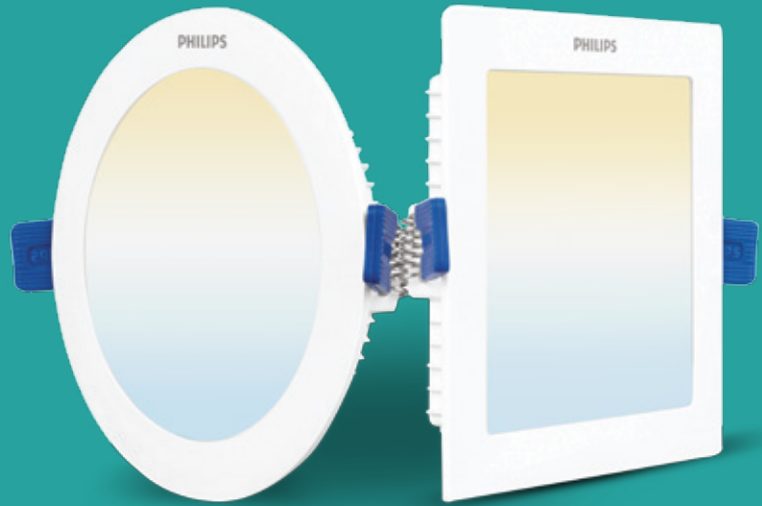
Voice control



# No Blue Light Hazard

## Smart Wi-Fi LED Downlight Gen2

5W, 10W, 15W



### Specifications:

- Tunable/dimmable white connected downlights
- 2 year warranty
- Wide voltage protection 160V-360V
- Available in 2 shapes – Round and Square

12NC	Material Description	MRP (₹)
929002654201	5W Round Philips Smart Wi-Fi LED DL	1899
929002654301	5W Square Philips Smart Wi-Fi LED DL	1899
929002654401	10W Round Philips Smart Wi-Fi LED DL	2299
929002654501	10W Square Philips Smart Wi-Fi LED DL	2299
929002654601	15W Round Philips Smart Wi-Fi LED DL	2699
929002654701	15W Square Philips Smart Wi-Fi LED DL	2699

HSN Code: 94051090

## Smart Wi-Fi LED Bulb

### Specifications:

- 10W E27 and B22
- Wide Voltage Protection 160V-360V
- Tunable/dimmable color bulb

12NC	Material Description	MRP (₹)
929002487214	Philips Smart Wi-Fi Full color 10W LED Bulb E27-2049	1999
929002487214	Philips Smart Wi-Fi Full color 10W LED Bulb B22-2049	1999

HSN Code: 85395200



## Smart Wi-Fi T-Bulb

### Specifications:

- T-Bulb 10W 1000 lumen
- T-Bulb 12W 1080 lumen
- Tunable/dimmable white connected

12NC	Material Description	MRP (₹)
929003070913	T-Bulb 10W White Tunable Wi-Fi B22	2199
929002487214	T-Bulb 12W White Tunable Wi-Fi B22	2249

HSN Code: 85395200



## Smart Wi-Fi T-Beamer

### Specifications:

- T-Beamer 20W 2000 lumen
- Tunable/dimmable white connected

12NC	Material Description	MRP (₹)
929003071113	T-Beamer 20W White Tunable Wi-Fi B22	2399

HSN Code: 85395200

## Smart Wi-Fi LED Batten

### Specifications:

- Dimmable and tunable white light from 3000K to 6500K
- 24W, Lumens – 2800 lm (@115 lumen per watt for 6500K) Length – 4 ft

12NC	Material Description	MRP (₹)
91951581397	Batten 24W White Tunable, Wi-Fi	2499

HSN Code: 85395200



# Pep up your home with wider lightspread

Philips T-Bulb

T-Bulb





## T-Bulb Curvey

12W, 18W

### Specifications:

- 12W: 1100 lm, 18W: 1620 lm, available in 6500K B22
- New attractive convex form factor
- Ease of application:
  - Can be used in existing bulb holder
  - Swivel body action for better adjustment
- 26% wider light spread
- Low glare with better quality diffuser
- Surge protection of 2.5 kV

HSN Code: 85395000

MRP: ₹319, ₹749



## T-Bulb

10W, 12W, 14W, 20W, 30W, 40W

### Specifications:

- 10W: 1000 lm, 12W: 1200 lm, 14W: 1400 lm, 20W: 2000 lm, 30W: 3000 lm, 40W: 4000 lm
- Innovative design for better lightspread
- Swivel body for better focus and change in the light direction as per requirement upto 35 degrees (up or down)
- 15,000 life hours
- Available in CDL B22 and E27 (WW B22, E27 in 10W)

HSN Code: 85395000

MRP: ₹310, ₹325, ₹450, ₹600, ₹799, ₹899

## T-Beamer

20W, 25W

### Specifications:

- 20W: 2000 lm, 25W: 2500 lm B22, Plug n play
- Designed to deliver widespread light similar to a regular LED batten
- Wider body (diffuser) than regular LED batten for better eye comfort
- Swivel body for movement to change the light direction as per requirement
- Applications: living room, bed room, shop front, passage, general lighting

HSN Code: 85395000

MRP: ₹419, ₹599



## T-Bulb Rangoli

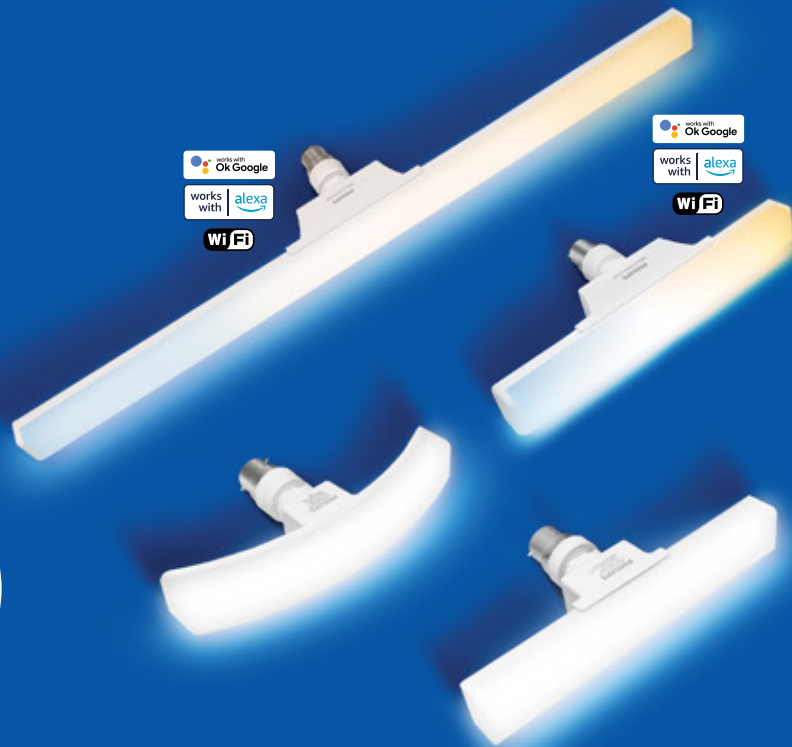
5W

### Specifications:

- T-bulb in colored variant for festive decoration
- Red, Green, Blue, Yellow
- Can be used to decorate specific areas in the house
- Wider light spread than any other ordinary bulb
- Low glare with better quality diffuser
- Available in B22 cap

HSN Code: 85395000

MRP: ₹250



**26%**  
Wider  
Light Spread\*

## Philips T-Bulb

Old bulb ko no, **Philips T-Bulb** lo



\*12W T-Bulb Curvy in comparison to 9W LED Bulb based on third party lab test.

LED Battens

# Quality illumination for a quality life

Philips Batten range



  
EyeComfort  
Technology™

# No Blue Light Hazard



# Up to relax Down to work

Philips **TwinGlow**



20 watt\* + 20 watt\*  
2000 lm\*\* + 2000 lm\*\*  
Uplight Downlight



**Relax mode** yellow (up-light)

The yellow relax mode up-light directed towards the ceiling bounces off across the entire room creating a cozy warm feeling.



**Work mode** white (down-light)

The white work mode down-light directly focuses downwards, spreading across the room to give maximum light where needed.



EyeComfort  
Technology\*

# No Blue Light Hazard



# TwinGlow

## 20W+20W

20W Uplight + 20W Downlight  
2000 lm + 2000 lm

## 25W+25W

25W Uplight + 25W Downlight  
2500 lm + 2500 lm



### Specifications:

- Innovative feature of both Uplight (Relax Mode - Indirect Light) and Downlight (Work Mode - Direct Light)
- Automobile-inspired chrome decal and branding with glistening mirror finish
- Super bright lightsread covers entire room in either mode (Uplight or Downlight)
- Ideal for rooms where false ceiling is not present - to get the ambience of cove light (indirect light) and LED tubelight (direct light) in one single package
- Available in (blue uplight + white downlight) and (yellow uplight + yellow downlight) variants

HSN Code: 94051090

MRP: ₹1499, ₹2999

### Work mode



Direct Downlight (white)  
Ideal for reading, writing, working etc.

### Relax mode



Indirect Uplight (yellow)  
Ideal for watching TV, party time, unwinding etc.

## Mirolta Pro

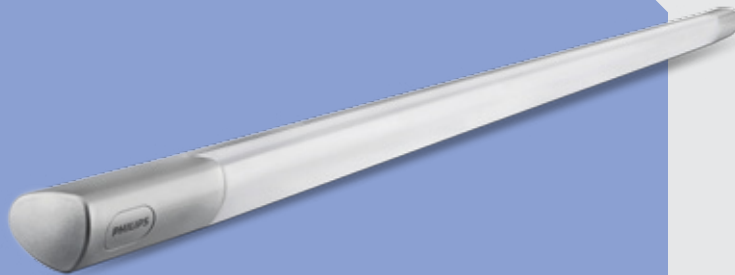
36W: 3600 lm (available in CDL)

### Specifications:

- Beautiful and powerful: stunning design to match your living room decor
- Housed in aluminum extrusion for better heat dissipation and longer life
- Wider serrated diffuser for enhanced and uniform lightspread
- Eye Comfort Technology (no blue light hazard)

HSN Code: 94051090

MRP: ₹2199



## Mirolta Pro Tunable

30W: 3300 lm (with remote control)

### Specifications:

- Operates via the provided remote to match the lighting to your style:
  - 5 step dimming process (high to low)
  - 5 step color modes (3000K to 6500K)
- Beautiful and powerful: artistic design to match your living room decor
- Housed in aluminum extrusion for better heat dissipation and longer life
- Wider serrated diffuser for enhanced and uniform lightspread
- Eye Comfort Technology (no blue light hazard)

HSN Code: 94051090

MRP: ₹2499

## Mirolta Essential

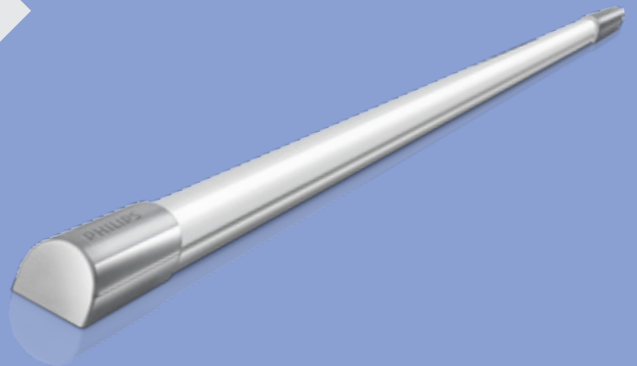
22W: 2000 lm (6500K – CDL)

### Specifications:

- Refreshing and unique design to match modern day homes
- Robust metal construction for better heat dissipation and longer life
- Designed for bedrooms and mid-sized spaces
- Delivers 10% higher brightness than regular 20W batten
- Eye Comfort Technology (no blue light hazard)

HSN Code: 94051090

MRP: ₹899



## SlimLine Extra Shine

22W: 2200 lm

### Specifications:

- High brightness 22W 2200 lm (4ft)
- Batten for domestic & commercial applications
- Designed for home, offices, parking spaces, garages, go-downs and corridors/large spaces
- Delivers > 100 lumen/watt efficiency
- Long life of 15,000 hrs
- Modern design; Low glare and no flicker
- High performance Diffuser for uniform lighting
- Resistant to yellowing and chipping
- High voltage protection
- Easy installation clips for user-friendly installation

HSN Code: 94051090

MRP: ₹799



## SlimLine Advance

25W: 2500 lm

(Available in CDL, WW, NW)

### Specifications:

- Positioned as "The Study Room Specialist"
- Exclusively designed for study rooms and personal workspaces at home
- Delivers 25% more brightness than standard 4 ft 20W LED battens
- Robust aluminum construction for better heat dissipation and longer life
- Case size: 20 pcs
- Dedicated earthing provision and cable included in box for user safety

HSN Code: 94051090

MRP: ₹1099



## SlimLine Advance

30W: 3000 lm

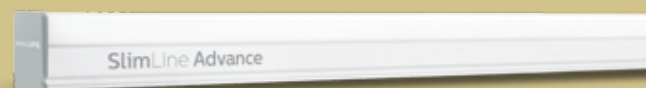
(Available in CDL, WW, NW)

### Specifications:

- Positioned as "The Living Room Specialist"
- Exclusively designed for living rooms and larger bedrooms/study rooms
- Delivers 50% more brightness than standard 4 ft 20W LED battens
- Robust aluminum construction for better heat dissipation and longer life
- Dedicated earthing provision and cable included in box for user safety

HSN Code: 94051090

MRP: ₹1299





## SlimLine Advance

36W: 3600 lm  
(Available in CDL, WW, NW)

### Specifications:

- Exclusively designed for large living rooms and large spaces/bedrooms at home
- Delivers double the brightness than standard 18W: 1800 lm LED Battens
- Unique new design for better aesthetic appeal
- Robust aluminum construction for better heat dissipation and longer life
- Dedicated earthing provision and cable included in box for user safety

HSN Code: 94051090

MRP: ₹1599

## SlimLine Compact

20W: 2000 lm (length 554 mm)

### Specifications:

- Exclusively designed for kitchens and compact rooms/spaces
- Delivers brightness of a standard 4 ft batten in a 2 ft form factor
- Robust aluminum construction for better heat dissipation and longer life
- Available colors-6500K (CDL)  
Case size: 20 pcs

HSN Code: 94051090

MRP: ₹800



## SlimLine NEXT

20W: 1900 lm  
(Available in CDL, WW, NW)

- Modern design, low glare and no flicker
- High performance diffuser for uniform lighting
- Resistant to yellowing and chipping
- High voltage protection
- Easy installation clips for user-friendly installation
- Pack size: 20 pcs

HSN Code: 94051090

MRP: ₹599





## AstraLine

20W: 2000 lm, 9W: 900 lm, 5W: 450 lm  
(Available in CDL, WW, NW)

### Specifications:

- Bright LED light source with uniform light output
- Surge protection of 2 kV with wide voltage protection 160-360 V
- Case size: 20 pcs

HSN Code: 94051090

MRP: ₹4 ft: ₹600, ₹2 ft: ₹400, ₹1 ft: ₹350



## AstraLine Plus

24W: 2500 lm  
(Available in CDL, WW, NW)

### Specifications:

- Bright LED light source with uniform light output
- Surge protection of 2 kV with wide voltage protection 160-360 V
- Case Size: 20 pcs

HSN Code: 94051090

MRP: ₹799



## Inverter Batten

20W: 2000 lm in AC mode

### Specifications:

- Backup time up to 4 hrs
- Lithium-ion battery for longer life
- Short circuit protection and surge protection up to 2.5 kV

HSN Code: 94051090

MRP: ₹1499





## Sensor Batten

20W: 2000 lm

### Specifications:

- Power-saving LED lighting
- Smart motion and ambient light sensor

HSN Code: 94051090

MRP: ₹1099

## Tarang Sleek and Tarang Electronic

36W: 2650 lm, 36W: 2450 lm

### Specifications:

- Elegant slim design
- Robust metal body
- Wide voltage protection (140-270 V) and highest surge protection of 2 kV in the category
- Case size: 30 pcs and 16 pcs

HSN Code: 940510

MRP: ₹380, ₹400



## StellarBright TLED

25W (StellarBright TLED  
6500K with batten)

### Specifications:

- 25W: 2500 lm
- 15,000 hours life
- Ideal replacement of conventional batten and tube

HSN Code: 85395000

MRP: ₹599



# StellarBright TLED

20W (StellarBright  
TLED 6500K tube)

## Specifications:

- 25W: 2100 lm
- 15,000 hours life
- Ideal replacement of conventional batten and tube

HSN Code: 85395000

MRP: ₹350



# Styles that complete your home

Philips LED Luminaires

LED Luminaires



EyeComfort  
Technology\*

# No Blue Light Hazard



# HexaStyle

8W, 12W, 15W

(Available in WW, NE, CW)

Reimagine your world with Philips HexaStyle downlights, which have a unique hexagonal shape with a round fitment for easy installation. These downlights give you the freedom to embrace your creativity by arranging them in any pattern and configuration, and design your space your way!



## Specifications:

- New hexagonal design
- Create unique patterns
- Fits regular round cut-out

HSN Code: 94051090



# PrimePlus UltraGlow

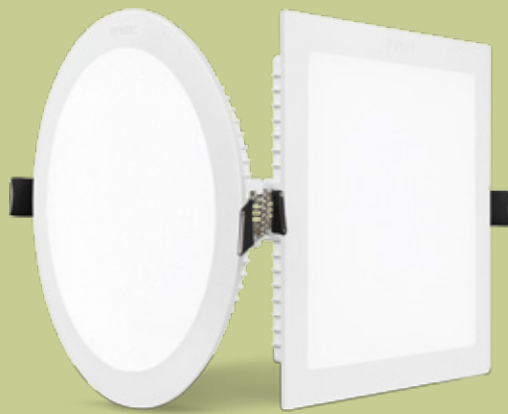
Bright downlights, solid performance

5W, 10W, 12W, 15W, 22W

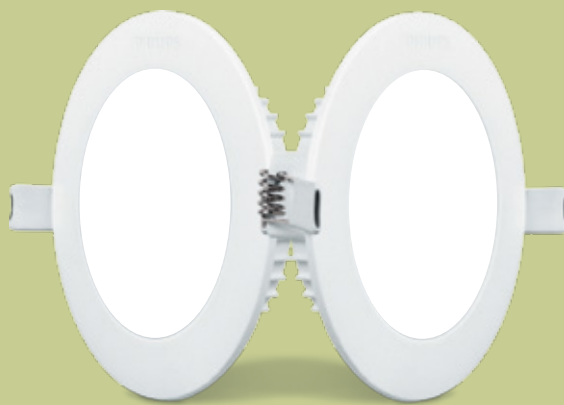
Wattage	Lumens	Colors	Shape	Cutout (mm)
5W (R)	500	CW/NW/WW	R (Junction Box fitting), Sq	75 mm
10W (R & Sq)	1000	CW/NW/WW	R, Sq	110 mm
12W (R & Sq)	1200	CW/NW/WW	R, Sq	140 mm
15W (R & Sq)	1500	CW/NW/WW	R, Sq	152.4 mm
22W (R & Sq)	2200	CW/NW/WW	R, Sq	188 mm

## Specifications:

- Brightest synthetic DL; light output of 100 lm/Watt
- Even and comfortable light with no dark spots
- Longer life: 25,000 hrs. long life
- Superior matt finish with polycarbonate housing
- Anti-glare diffuser delivers superior eye comfort



HSN Code: 94051090



HSN Code: 94051090

# 5W PrimePlus UltraGlow

Now in red, blue, green and pink  
Fits perfectly in 3" junction box

Wattage	Cutout (mm)	Pack size (pcs)	Color	Shape
5W	75	24	Red, green, blue, pink	R (Junction box fitting), sq

## Specifications:

- Brighter at 75 lumens/watt
- Eye Comfort Technology: designed for low glare, reduced flicker and no blue light hazard
- Wide voltage protection (160-360 V)
- Surge protection up to 2.5 kV

# Astra Metallica

100 lm/watt

Wattage	Cutout (mm)	Pack size (pcs)	Color	Shape
5W	80 mm (JB)/110 mm (Non JB)	12	WW, NW, CW	R (Junction box fitting), sq
10W	136 mm	12	WW, NW, CW	R, Sq
15W	159 mm	12	WW, NW, CW	R, Sq
18W	178 mm	12	WW, NW, CW	R, Sq

## Specifications:

- Premium aluminum material for endurance
- Life class: 25,000 burning hours
- Surge protection of 2 kV/BIS certified
- Wide voltage protection (160 V-360 V)
- Junction box fitting available: 5W



HSN Code: 94051090

# Ujjwal Downlight

5W, 10W, 15W, 22W

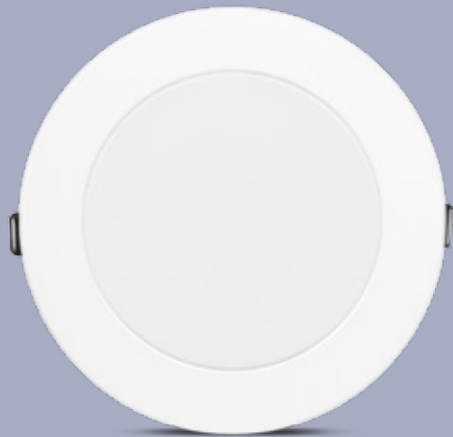
Wattage	Lumens	Colors	Shape	Cutout (mm)
5W	350	CW/NW/WW	R (Junction Box fitting), Sq	75 mm
10W	700	CW/NW/WW	R, Sq	110 mm
15W (R & Sq)	1050	CW/NW/WW	R, Sq	140 mm
22W (R & Sq)	1540	CW/NW/WW	R, Sq	188 mm

## Specifications:

- 5W - Fits into junction box
- Superior matt finish with polycarbonate housing
- Even and comfortable light with no dark spots  
Efficacy of 60 lm/Watt
- Anti-glare diffuser delivers superior eye comfort
- No visible flickering, no UV/IR
- 1 Year Warranty



HSN Code: 94051090



HSN Code: 94051090

## StarFit

Downlight that doesn't require false ceiling  
5W, 7W, 10W

### Specifications:

- Fits perfectly into a concrete ceiling with a 3" junction box, or false ceiling
- Superior matt finish with polycarbonate housing
- Even and comfortable light with no dark spots  
Efficacy of 70 lm/Watt
- Anti-glare diffuser delivers superior eye comfort
- No visible flickering, no UV/IR
- 5W available in different colors

Wattage	Lumens	Colors	Shape	Cutout (mm)
5W	300	CW/NW/WW/ R/G/B/P	R	80 mm
7W	490	CW/NW/WW	R	80mm
10W	700	CW/NW/WW	R	80 mm

## 3W StarFit

Junction box 2" downlight



Wattage	Cutout (mm)	Pack size (pcs)	Color	Shape
3W	43	30	WW, NW, CW	R (Junction box fitting)
3W	43	30	Red, Green, Blue, Pink	R (Junction box fitting)



### Specifications:

- Fits perfectly in a 2 inch small junction box
- Matt diffuser
- Wide voltage protection (160-360 V)
- Surge protection up to 2 kV

HSN Code: 94051090





## TrueFit

8W, 15W

Downlight for 2 inch deep junction box

Wattage	Lumens	Color	Shape	Cutout
8W	720	CW/NW/WW	R	45 mm
15W	1350	CW/NW/WW	R	45 mm

### Specifications:

- Fits perfectly into a concrete ceiling in a 2" deep junction box
- Extra bright light of 90 lm/Watt
- Even and comfortable light with no dark spots
- Anti-glare diffuser delivers superior eye comfort

HSN Code: 94051090

## Star Surface

Low profile surface-mount ceiling lights

Wattage	Dimension (mm)	Pack size (pcs)	Lumen	Shape	Color
7W	146x146x25	12	600	R, Sq	WW, NW, CW
12W	178x178x25	12	900	R, Sq	WW, NW, CW
18W	234x134x25	12	1450	R, Sq	WW, NW, CW
22W	300x300x25	12	1700	R, Sq	WW, NW, CW

### Specifications:

- Slim, sleek profile: 25 mm thickness
- Low glare to prevent eye strain
- Surge protection of 2 kV/BIS certified
- Wide voltage protection (160 V-360 V)
- 22W: Large format, size: 1 ft x 1 ft

HSN Code: 94051090

**22W: LARGE FORMAT**

1 X 1 size



HSN Code: 94051090

## FullGlow

6W, 12W, 18W, 24W

Wattage	Lumens	Colors	Shape	Dimension
6W	600	CW/NW/WW	R, Sq	102 X 29 mm
12W	1200	CW/NW/WW	R, Sq	145 X 29 mm
18W	1800	CW/NW/WW	R, Sq	200 X 29 mm
24W	2400	CW/NW/WW	R, Sq	200 X 29 mm

### Specifications:

- Brightest synthetic surface light with 100 lm/Watt in both round and square shape
- FullGlow diffuser: wider lightspread of 270 degree
- Robust rimless design
- Super slim design with only 29 mm height; Doesn't protrude from the ceiling
- Modularity in mounting bracket, can be mounted on surface as well as junction boxes



# AstraSpot COB Series

## Focused spotlights

Wattage	Cutout (mm)	Pack size (pcs)	Color	Shape
7W	77	12	WW, NW, CW	R
12W	92	12	WW, NW, CW	R
20W	110	12	WW, NW	R

### Specifications:

- Strong focused beam (36° beam)
- Adjustable/tiltable head (25°)
- Metal heat sink for durable performance
- Long life LEDs for durable performance

HSN Code: 94051090



# AstraSpot 2W

## 2W Focused spotlight

Wattage	Cutout (mm)	Pack size (pcs)	Color	Shape
5W	35	48	WW, NW, CW	R

### Specifications:

- Strong focused beam (36° beam)
- White synthetic housing
- Long life LEDs for durable performance

# AstraSpot 2W Color

## R, G, B 2W focused spotlight

Wattage	Cut out (mm)	Pack size (pcs)	Color	Shape
2W	35	48	WW, NW, CW	R

### Specifications:

- Strong focused beam (36° beam)
- White synthetic housing
- Long life LEDs for durable performance

HSN Code: 94051090





## AstraSpot COB 3W

### Focused spotlight

Wattage	Cut out (mm)	Pack size (pcs)	Color	Shape
3W	52	30	WW, NW, CW	R

#### Specifications:

- Strong focused beam (36° beam)
- White metal housing
- Metal heat sink for durable performance

HSN Code: 94051090

## AstraSpot COB 3W Tilt

### Adjustable focused spotlight (tilt option)

Wattage	Cut out (mm)	Pack size (pcs)	Color	Shape
3W Tilt	64	30	WW, NW, CW	R

#### Specifications:

- Strong focused beam (36° beam)
- Tilt angle of 25°
- Metal heat sink for durable performance

HSN Code: 94051090



## Slim Star: Tilttable spot

### 3W, 5W

Wattage	Lumens	Color	Shape	Cutout
3W	270 Lm	CW/NW/WW	R	63 mm
5W	450 Lm	CW/NW/WW	R	73 mm

#### Specifications:

- Tilttable spotlight
- 60° degree beam angle
- Bright light with 90 lm/Watt
- 15,000 hrs life
- Focused light output to enhance your décor
- Wide voltage and surge protection

HSN Code: 94051090

# Marathon Ultra

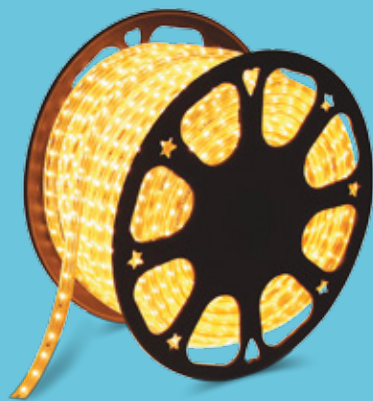
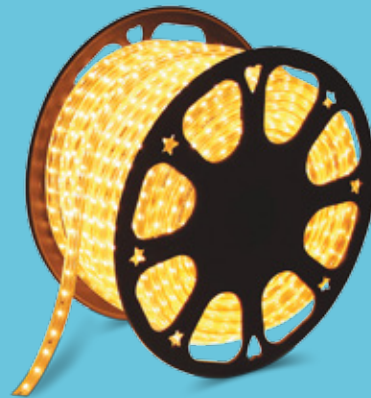
## Brightest LED rope light

Wattage	Lumens/meter	Color	Shape	Length
8W/mtr	700	WW/CDL/ Blue	Rope Light	50 mtr

### Specifications:

- 700 lumens/meter\*
- 120 LEDs/m for best light output and uniform light effect
- 8W per mtr
- IP65- withstands harsh weather conditions
- 50 mtr Roll for continuous use, Can be cut at every meter

HSN Code: 94051090



# Marathon Rope Light

## 400 lumens/meter\*

Wattage	Lumens/meter	Length (per pc)	Shape	Length
6W/mtr	400	WW/CDL/ R/G/B/P	Rope Light Rope Light	50 mtr (Marathon)
6W/mtr	400	WW/CDL/ R/G/B/P		20 mtr (Mini Marathon)

### Specifications:

- 72 LEDs/m light output and uniform light effect
- 6W per mtr
- IP65- withstands harsh weather conditions
- 50 mtr/20 mtr roll for continuous use, Can be cut at every meter

HSN Code: 94051090

# Cove Glow

## LED strip without driver

Wattage	Lumens/meter	Length (per pc)	Pack size (pcs)	Color	No. of LED per meter
24W	360	5 m without driver	20	CW, NW, WW, R, G, B, Magenta, Lemon Yellow, Aqua Blue	60

### Specifications:

- Uniform light spread for perfect ambience
- Superior adhesive for easy installation
- 1800 lm for 5m

HSN Code: 94051090



# ColorMagic LED Strip

25W, 25W

Wattage	Lumens	Color	Shape	Cutout
25W	460	WW+Blue	Strip Light	5 mtr
25W	460	NW +Blue	Strip Light	5 mtr

## Speci cations:

- 5 meter with driver LED Strip especially designed for cove lighting.
- 2in1 Strip – 2 colors in 1 strip.
- Innovative concept helps in changing the ambience just by a toggle of the wall switch; choose between WW or Blue /NW or Blue by using the same strip.
- Uniform brightness with 460 lumens/meter\*
- Superior 3M adhesive for easy and worry-free installation

HSN Code: 94051090



# Make yourself feel at home

## Philips Home Lighting range



## Comet

Max 23W CFL

### Specifications:

- Aesthetic design
- Designed for energy saving lamps
- Premium material and glossy finish

HSN Code: 94051900

MRP: ₹450



## Nova

7W, 400 lumen, Cool White

### Specifications:

- Contemporary design
- Long life Philips LED driver included
- No harmful UV/IR radiation

HSN Code: 94051100

MRP: ₹450

## Sigma

Max 23W

### Specifications:

- Aesthetic design
- Designed for energy saving lamps
- Mounting permits light upwards and downwards
- Premium material and finish

HSN Code: 94051900

MRP: ₹450





## Uno

Max 23W

### Specifications:

- Unique aesthetics
- Designed for energy saving lamps
- Premium material and glossy finish
- Ideal for living room, study room, bedroom

HSN Code: 94051900

MRP: ₹350

## Coral Slim LED Wall Light

10W, 500 lumen

### Specifications:

- Vibrant light pattern
- Long life LED light source
- Slim design, no harmful UV/IR radiation
- Anti-glare diffuser
- Available in Cool White and Warm White variants

HSN Code: 94051100

MRP: ₹1200



## Ultron

17W, 1350 lumen

### Specifications:

- Sleek construction
- Slim, modern design
- Premium material and finish
- Anti-glare diffuser
- No harmful UV/IR radiation
- Available in Cool White and Warm White variants

HSN Code: 94051100

MRP: ₹1600



## Ultron Scene Switch

22W, 2400 lumen

### Specifications:

- Tunable White (WW, NW and CW)
- Sleek construction
- Slim, modern design
- Premium material and finish
- Anti-glare diffuser
- No harmful UV/IR radiation

HSN Code: 94051100

MRP: ₹2100



## Orbit Desk Light

5W, 400 lumen

### Specifications:

- Rechargeable LED desk light
- 3-in-1 Scene Switch (WW, NW and CW)
- One-touch for brightness control and CCT change
- Sleek design, easy to adjust height and direction
- Charging time 3 hours; Backup time 2.5 hours
- Ideal for use in study and office

HSN Code: 94052100

MRP: ₹1900

## Skyy Desk Light

5W, 400 lumen, Cool White

### Specifications:

- Rechargeable LED desk light
- Works on touch control with continuous dimming feature
- Sleek design, easy to adjust height and direction
- Ideal for use in study and office
- Premium classy matt finish
- Charging time 4 hours; Backup time 3.5 hours

HSN Code: 94052100

MRP: ₹2050







## Cosmos Desk Light

5W, 550 lumen, Cool White

### Specifications:

- Rechargeable LED desk light
- Works on touch control with continuous dimming feature
- Fast-charging feature (2.5 hours charging for a backup of 3.5 hours)
- Modern, sleek look with utility holder
- Adjustable height and direction

HSN Code: 94052100

MRP: ₹2500

## Novus Desk Light

5W, 450 lumen, Cool White

### Specifications:

- Flexible & foldable design - Allows 360° flexibility
- Even light distribution
- Short-circuit and thermal protection
- Wide voltage protection 160V-360V
- Available in Black and White colors

HSN Code: 94052100

MRP: ₹1499



## Air Desk Light

5W, 250 lumen, Cool White

### Specification:

- No visible flickering, no UV/IR
- Low glare to prevent eye strain
- CRI > 80
- Flexible gooseneck
- Optimal heat management to prevent damage to LED light

HSN Code: 94052100

MRP: ₹1450



## Breeze Desk Light

5W, 250 lumen, Cool White

### Specifications:

- No visible flickering, no UV/IR
- Low glare to prevent eye strain
- CRI > 80
- Flexible gooseneck
- Optimal heat management to prevent damage to LED light

HSN Code: 94052100

MRP: ₹1450



## Ujjwal Plus

Rechargeable Emergency Light

32 LEDs, 250 lumen

### Specifications:

- Long life lithium-ion battery
- 360 degree bright light and plated reflector
- Charging time: 10 hours, Backup time: 4 hours
- Compact design with cable and plug included
- Overcharge and deep discharge protection
- Color: Dark Blue

HSN Code: 94054100

MRP: ₹1250

## Ujjwal Mini

Rechargeable Emergency Light

4W, 16 LEDs, 100 lumen

### Specifications:

- Long life lithium-ion battery
- 360 degree bright light and plated reflector
- Charging time: 4 hours, Backup time: 4 hours
- Compact design with cable and plug included
- Overcharge and deep discharge protection
- Color: Dark Blue

HSN Code: 94054100

MRP: ₹1250





## Ojas

### 6W Rechargeable LED Lantern

#### Specifications:

- Overcharge and deep discharge protection
- Lithium-ion battery of 2000 mAh
- Charging time: 8 hours; Backup time: 4 hours
- Auto ON in case of darkness
- Un-flickering light

HSN Code: 94054100

MRP: ₹2100

## Ojas Mini

### 3W Rechargeable LED Lantern (18 LEDs, 100 lumen)

#### Specifications:

- Overcharge and deep discharge protection
- Lithium-ion battery of 1300 mAh
- Charging time: 4 hours; Backup time: 4 hours
- Auto ON in case of darkness
- Un-flickering light

HSN Code: 94054100

MRP: ₹1490



## SlimRay (60 LEDs)

### Rechargeable Emergency Light 4W, 300 lumen

#### Specifications:

- Power ON indicator; charging indicator
- Charging time: 12 hours; Backup time: 5-10 hours
- Auto ON feature, Easy mounting
- Overcharge & deep discharge protection
- Wide beam and plated reflector ensures larger illumination area

HSN Code: 94054100

MRP: ₹2550



## SlimRay (30 LEDs)

Rechargeable Emergency Light  
2W, 160 lumen

### Specifications:

- Power ON indicator; charging indicator
- Charging time: 7 hours; Backup time: 4-9 hours
- Auto ON feature, Easy mounting
- Overcharge & deep discharge protection
- Wide beam and plated reflector ensures larger illumination area

HSN Code: 94051100

MRP: ₹1800



## Blaze Emergency Light

15W, 20 LEDs

### Specifications:

- Bright un-flickering light
- Multiple lighting ways – 5 light modes
- Charging time: 5 hours, Backup time: 4 hours
- Auto ON, Overcharge & deep discharge protection
- Charging indicator
- Front: 15W, 400 lumen; Side: 2W, 220 lumen

HSN Code: 94054100

MRP: ₹2200

## Blaze Neo Emergency Light

7W

### Specifications:

- Bright un-flickering light
- Multiple lighting ways – 2 light modes
- Charging time: 6 hours, Backup time: 3-5 hours
- Auto ON, Overcharge & deep discharge protection
- Charging indicator

HSN Code: 94054100

MRP: ₹2000





## Siria

5W, 250 lumen Rechargeable  
LED Lantern

### Specifications:

- Overcharge & deep discharge protection
- With charging indicator
- High quality rechargeable battery – 3.7 V lithium-ion battery (2200 mAh)
- Works on touch control
- Dimming regulator to control brightness level
- Charging time: 8 hours, Backup time: 2.5 – 4 hours
- Colors available: Yellow and Grey

HSN Code: 94054100

MRP: ₹2299

## Tesni

5W, 250 lumen Rechargeable  
LED Lantern

### Specifications:

- Overcharge & deep discharge protection
- With charging indicator
- High quality rechargeable battery – 3.7 V lithium-ion battery (2200 mAh)
- 360-degree lighting
- Dimming regulator to control brightness level
- Charging time: 8 hours
- Backup time (Dim light): 15 hours
- Backup time (Bright light): 2.5 hours

HSN Code: 94054100

MRP: ₹2299



## Helio

5W, 250 lumen Rechargeable  
LED Lantern

### Specifications:

- Overcharge & deep discharge protection
- With charging indicator
- 3 Light Modes – Headlight, Dim Light and Strong Light
- High quality rechargeable battery – 3.7 V lithium-ion battery (2200 mAh)
- Handheld portable design
- Charging time: 8 hours; Backup time: 2.5 – 8 hours
- Colors available: Red and Grey

HSN Code: 94054100

MRP: ₹1999



## Cyra

5W, 250 lumen Rechargeable  
LED Lantern

### Specifications:

- Overcharge & deep discharge protection
- With charging indicator
- 360-degree lighting
- High quality rechargeable battery – 3.7 V lithium-ion battery (2200 mAh)
- Charging time: 8 hours; Backup time: 2.5 – 8 hours
- Comes with unbreakable handle
- Colors available: Yellow and Grey

HSN Code: 94054100

MRP: ₹2099





# Brighten up your home

## Philips CFL and GLS

CFL and GLS



**EyeComfort**  
Technology<sup>®</sup>

# No Blue Light Hazard



## Standard Incadescent

25W, 40W, 60W, 100W, 200W



Combining the energy efficiency of fluorescent lighting with the convenience and light quality of incandescent bulbs, CFLs work best and have the most efficiency in areas where lights are on for long periods. These bulbs are perfect for task lighting when a need for extra brightness arises. CFLs work best and have the most efficiency in areas where lights are on for long periods.

### Specifications:

- Case size: 25W/40W/60W/  
100W: 100 pcs, 200W: 50 pcs
- HSN Code: 85392910
- 
- MRP: 25W / 40W: ₹18
- 
- 60W / 100W: ₹20
- 
- 200W: ₹40

## Softone

40W, 60W, 100W

### Specifications:

- Softer, frosted glow
- Case size: 100 pcs

HSN Code: 85392910

MRP: ₹30, ₹30, ₹30



## Essential CFLi

8W: 415 lm, 18W: 1010 lm

### Specifications:

- Available in BC22
- Available in CDL

12NC	Description	MRP (₹)
929689640209	Essential HPF NG Slim 8W CDL B22 1CT/12	155
929689640818	Essential HPF SLK NG 18W CDL B22 1CT/12	215



## Lustre Lamp

40W (E14, E27, B22)

### Specifications:

- Lamp type: Spiral
- Available in: ES
- Available in: CDL
- Case size: 100 pcs

HSN Code: 85392910

MRP: Clear: ₹40

Soft White: ₹40

## Infrared Lamp

250W, 375W

### Specifications:

- Lumen output becomes upto 50% when on battery mode
- Case size: 10 pcs

MRP: ₹600, ₹650





## Candle

25W, 40W B22  
40W E14

### Specifications:

- 25W Clear E27
- 25W Pearl Candle
- Case size: 50 pcs

HSN Code: 85392910

MRP: ₹40, ₹40

## Decoration Colored Lamp

10W (Frosted), 15W (Clear, Red, Green, Yellow, Blue and Orange)

### Specifications:

- Colored decoration lamp
- Applications: Festive lighting, pooja room, night lamp
- 10W Case size: 100 pcs
- 15W Case size: 20X12

HSN Code: 85392910

MRP: ₹20



## Double-ended Halogen

500W and 1000W

### Specifications:

- Case size: 50 pcs

HSN Code: 85392110

MRP: ₹120, ₹140





## CFL-NI PL-C Lamps

10W, 13W, 18W, 26W

### Specifications:

- 6500K
- Available in 2 pin and 4 pin

Model Number: PL-C

HSN Code: 85393110

MRP: ₹250

## CFL-NI PL-L Lamps

18W, 36W

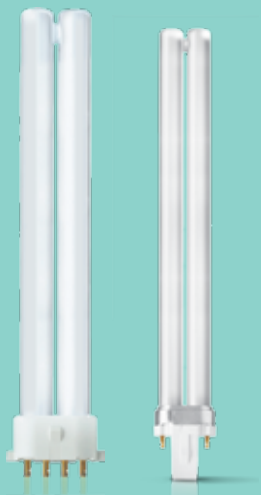
### Specifications:

- Available in 2 pin and 4 pin
- 2 color temperatures: 2700K and 6500K
- Only available in CDL temperature

Model Number: PL-L

HSN Code: 85393110

MRP: ₹250, ₹250



## CFL-NI PL-S Lamps

9W, 11W

### Specifications:

- Available in 2 pin and 4 pin
- 2 color temperatures: 2700K and 6500K

Model Number: PL-S

HSN Code: 85393110

MRP: ₹250



# Illuminating your life

## Philips TL



# No Blue Light Hazard



# T8 Lifemax

Industrial 18W and 36W available for bulk supplies



Offering long life and quality, this tubelight is apt for energy efficient task lighting and fits almost any lighting need. Philips innovation has reduced the mercury level without sacrificing life or performance, enhancing the safety for the lighting solution.

#### Specifications:

- Lumen: 1015 lm/2450 lm
- Life: 15,000 hours
- Case size: 18W: 25 pcs, 36W: 36 pcs

HSN Code: 85393190

MRP: ₹55, ₹60

## T5 Essential

14W

### Specifications:

- Lumen: 1220 lm/2600 lm
- Life: 15,000 hours
- 830/840/865 colors available
- Case size: 40 pcs

HSN Code: 85393190

MRP: ₹120



## T8 Lifemax Plus

36W

### Specifications:

- Lumen: 2650 lm
- Life: 21,000 hours
- Case size: 36 pcs

HSN Code: 85393190

MRP: ₹60



## T12 Champion 3-in-1

20W and 40W

### Specifications:

- Lumen: 940 lm/2450 lm
- Life: 15,000 hours
- Case size: 30 pcs

HSN Code: 85393190

MRP: ₹60



## T8 Champion Maxbright

36W with twin glow technology

### Specifications:

- 15,000 hours
- Case size: 36 pcs

HSN Code: 85393190

MRP: ₹70



## T8 Superbright

36W

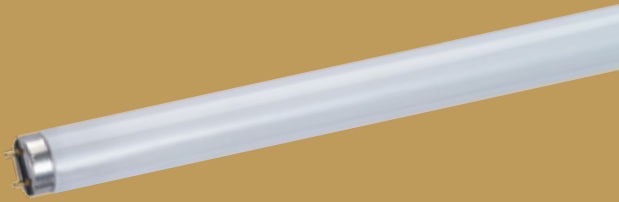
### Specifications:

- Lumen: 3200 lm
- Life: 20,000 hours
- Available in color 865
- Case size: 36 pcs
- CRI>80



HSN Code: 85393190

MRP: ₹80



## Starter S2, S10

### Specifications:

- Designed for 36W and 40W tubelight

12NC	Description	MRP (₹)	Pack size
928390710105	S2 4-22W SER 220-240V WH 12X25 IND	45	300
928390710105	S10 TLD STARTER MAKE-A-LITE	15	1152







# Switch to elegance

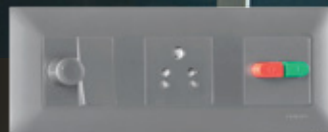
## Philips Modular Switches



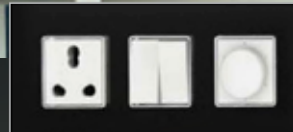
Modular Switches



Smart Range



Metallica



Mirror Glaze



Smart+



TripleProtection<sup>®</sup>  
Technology



DualShutter<sup>®</sup>  
Technology



Innovative Front Removal  
& Insertion Technology



ECO-friendly<sup>®</sup>  
Technology



RoHS  
compliant

# Switch to premium living

Philips Modular Switches



Smart Range



Metallica



Mirror Glaze



Smart+



TripleProtection<sup>®</sup>  
Technology



DualShutter<sup>®</sup>  
Technology



Innovative Front Removal  
& Insertion Technology



ECO-friendly<sup>®</sup>  
Technology



RoHS  
compliant

## Mirror Glaze

### Specifications:

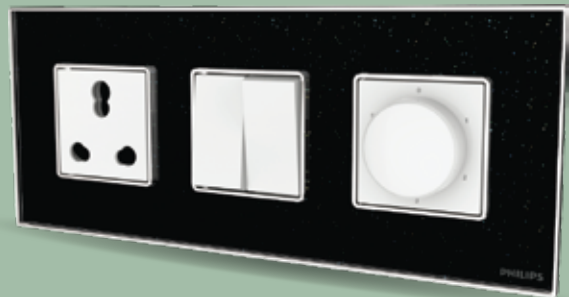
- Multiple color/sparkle options for superior look
- Light weight/ultra-durability
- Easy to clean
- Great strength due to honeycomb ribs construction

Generic Name : Grid & Cover - 6M Mirror Glaze Black

12NC: 913713947301

MRP: ₹1657

HSN Code: 85365020



## Smart+

### Specifications:

- Blend of glossy and matt finish makes it premium
- Light weight/ultra-durability
- Great strength due to honeycomb ribs construction

Generic Name : Switch 1M-1W 10AX Smart+ Matt Black

12NC : 913713638801

MRP : ₹138

Generic Name : Grid & Cover-4M Smart+ Matt Black

12NC : 913713642501

MRP : ₹1280

HSN Code : 85365020

## Smart

### Grid and Cover

### Specifications:

- Premium glossy finish - easy to clean
- Triple protection technology
- Great strength due to honeycomb ribs construction

Generic Name : Switch 1M-1W 10AX Smart-White

12NC : 913713911049

MRP : ₹135

Generic Name : Grid & Cover-6M Smart-White

12NC : 913713914849

MRP : ₹282

HSN Code : 85365020



## DurroEco Range

### Specifications:

- Brass terminals and contacts for longer life
- Triple protection technology
- Better locking mechanism
- Shrouded terminals with captive screws
- Softer sound with premium feel

Generic Name : Switch 1M 1Way 10AX DurroEco

12NC : 913715134701

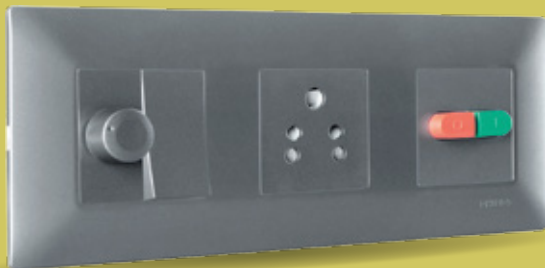
MRP : ₹49

Generic Name : Grid & Cover-6M DurroEco

12NC : 913715137601

MRP : ₹197

HSN Code : 85365020



## Metallica

### Specifications:

- Premium metallic color to enhance decor
- Dual shutter and triple protection technology
- Innovative front removal and insertion technology

Generic Name : Switch 1M 1Way 10AX Metallica

12NC : 913713969801

MRP : ₹142

Generic Name : Grid & Cover-6M Metallica

12NC : 913713972701

MRP : ₹475

HSN Code : 85365020

## Smart+



# Tough and sturdy accessories



Lighting Accessories



RoHS

ROHS compliant



High standards of safety



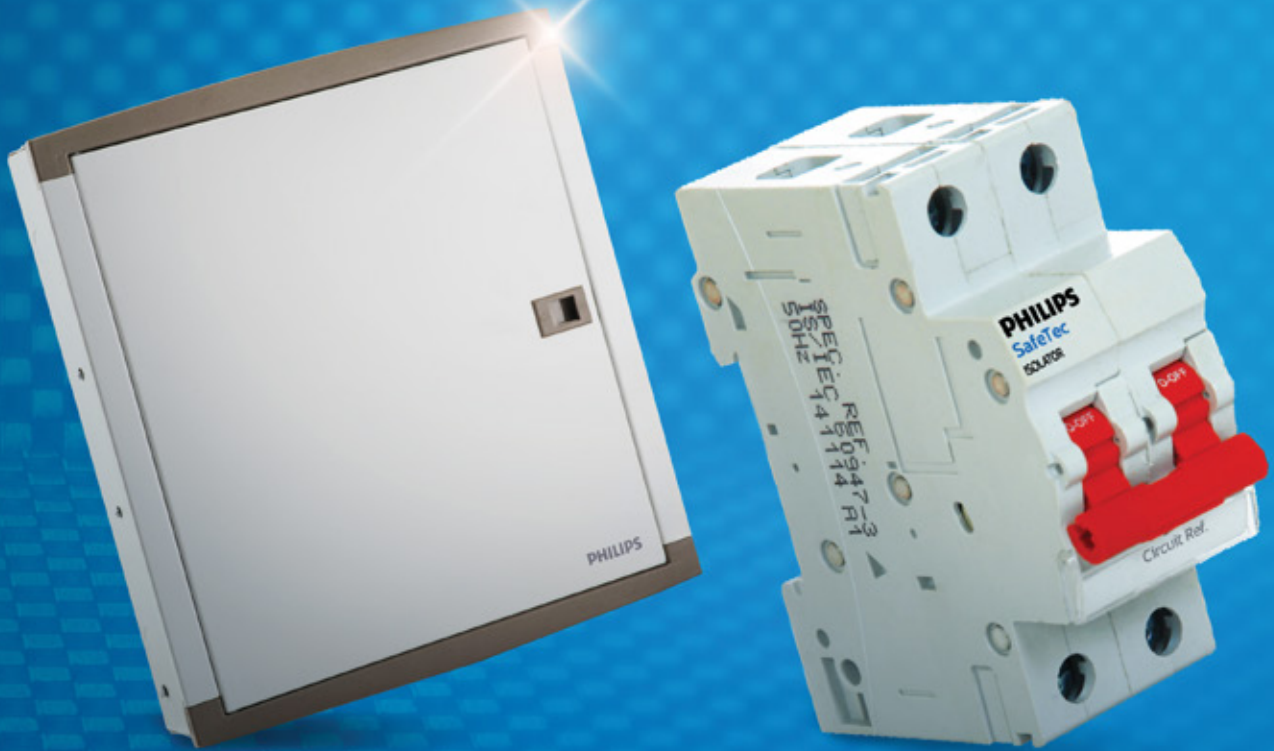
Energy efficient



Elegant design

# Sturdy and durable accessories for your home

A comprehensive range of Lighting Accessories, **MCBs**, **RCCBs** and **Distribution Boxes** designed to keep your appliances safe as well as add to the decor.



ROHS compliant



High standards of safety



Energy efficient



Elegant design



## Smart Harmony

### Musical Doorbell

#### Specifications:

- Aesthetically beautiful design
- High sound output
- Power efficient
- Available in two colors
- Voltage : 3V, 2 battery (1.5V), AA

12NC	Generic Name	MRP (₹)
913713825601	Smart Harmony Musical Doorbell - Grey	326
913713833101	Smart Harmony Musical Doorbell - Cyan	326

HSN Code: 85365020

## Smart Buzz

### Doorbell

#### Specifications:

- Crisp and loud pleasurable sound
- Premium glossy finish
- Easy to install
- Durable sleek design
- Carbon tip for crisp audible sound
- Low power consumption
- Available in two colors
- Voltage : 240V ac/~, 50Hz.

12NC	Generic Name	MRP (₹)
913713818701	Smart Buzz Ding Dong Doorbell - Blue	286
913713818801	Smart Buzz Ding Dong Doorbell - Grey	286



## Modular Lamp Holder

#### Specifications:

- Fire retardant
- Available in white and grey colors
- Lamp Holder – PBT glass filled
- Pins & terminal - brass
- Captive screw
- Shrouded terminals
- Voltage : 240V AC/~, 50Hz.

12NC	Generic Name	MRP (₹)
913713859001	Modular Lamp Holder B22 Straight - Grey	110
913713859101	Modular Lamp Holder B22 Angular - Grey	113
913713859201	Modular Lamp Holder B22 Straight - White	110
913713859301	Modular Lamp Holder B22 Angular - White	113

HSN Code: 85366110





## Deco Lamp Holder

### Specifications:

- Available in blue, pink and white colors
- Superior shape with straight and angular configuration
- Captive screw
- Lamp Holder – PBT glass filled
- Eclipse mounting holes for easy installation
- Ring gripper
- Shrouded terminals

12NC	Generic Name	MRP (₹)
913713900101	Deco Lamp Holder Angular B22 White	66
913713699901	Deco Lamp Holder Straight B22 White	66
913713900301	Deco Lamp Holder Angular B22 Blue	69
913713900201	Deco Lamp Holder Straight B22 Blue	69
913713900501	Deco Lamp Holder Angular B22 Pink	69
913713900401	Deco Lamp Holder Straight B22 Pink	69

HSN Code: 85366110



## Plug Tops Range

### Specifications:

- Convenient gripping
- High heat resistant body
- Nickel plated pins
- Easy wire routing with additional space
- Sturdy body with elegant design

12NC	913713678501	913713678601
Description	3 Pin Plug 6A	3 Pin Plug 16A
Packaging	Single pc mono carton	Single pc mono carton
Shipper box	120 pcs	120 pcs
MRP	₹ 82	₹ 122

## Solution Boxes

### Specifications:

- Dual Shutter Technology and One Pin Non-entry
- Overload protection with high degree of insulation
- Suitable for air conditioner, microwave oven, mixer grinder

12NC	Generic Name	MRP (₹)
913702331101	Solution Box-25A Trip starter with Socket	742
913702333601	Solution Box-25A Motor starter without socket & plug	1355
913702339101	Solution Box-25A Trip starter without socket & plug	929

HSN Code: 85369010



# MCB, RCCB and ISOLATORS

## MCB

### Specifications:

- RoHS compliant
- ISI certified
- IP 20 protected
- Energy efficient
- Conforms to IEC 60898 and IS : 8828 standards
- Energy limiting class 3
- Trip-free mechanism
- Designed with increased air circulation enhancing efficiency and life
- Combination head captive screws
- High terminal capacity
- Available in 1P, 2P, 3P, 4P, SPN & TPN

12NC	Generic Name	MRP (₹)
913713920249	MCB 1 Pole Curve B 16 A	238
913713926249	MCB 1 Pole Curve C 16 A	250
913713929249	MCB 2 Pole Curve C 16 A	726

HSN Code: 85362030



## RCCB

### Specifications:

- Confirms to IEC 61000 and IS: 12460-1 standards
- High shock resistance
- Combination head captive screws
- IP 20 protection with finger-proof terminals
- High terminal capacity to accommodate a 35 sq. mm cable
- Wide residual current range from 30 mA to 300 mA
- Available in 2P & 4P

12NC	Generic Name	MRP (₹)
913713936549	RCCB Two Pole 25A/30mA	2999
913713938049	RCCB Four Pole 25A/30mA	3879

HSN Code: 85362040

## Trip Starter

### Specifications:

- Short circuit breaking capacity-3 KA with IP 20 protection
- Compatible with all ranges of Philips modular switches
- Glossy finish; easy to clean
- Available in 6A, 10A, 16A, 20A, 25A, 32A power rating

12NC	Generic Name	MRP (₹)
913713663701	Trip starter - 6A - Smart Range	257
913713663801	Trip starter - 10A - Smart Range	257
913713663901	Trip starter - 16A - Smart Range	257
913713664001	Trip starter - 20A - Smart Range	257
913702304401	Trip Starter 25A - Active-white (N)	257
913702307401	Trip Starter 32A - Active-white (N)	257

HSN Code: 85362030



## Isolator

### Specifications:

- Conforms to IEC 60947-3 standards
- Resistant to shock- 40 mm free fall
- Combination head captive screws
- IP 20 protection with finger-proof terminals
- High terminal capacity to accommodate a 35 sq. mm cable
- Energy efficient
- Available in 1P, 2P, 3P & 4P
- 40A to 100A

12NC	Generic Name	MRP (₹)
913713934549	Isolator 1 Pole 40 A	309
913713935049	Isolator 2 Pole 40 A	452

HSN Code: 85362030

## Distribution Box

### Specifications:

- Premium quality powder coating applied to avoid rusting
- Level marking for easy flush mounting
- Masking sheet provision to avoid cement spillage
- Optional wire entry on side walls

### Available range

- Single Door SPN 4Way & 8Way
- Double Door SPN 4Way to 16Way
- Double Door TPN 4Way to 8Way

12NC	Generic Name	MRP (₹)
913713968701	Single Door SPN 4Way	1200
913713968901	Double Door SPN 4Way	1875

HSN Code: 85371000



# LED Lamp Drivers

## Sumo Xtreme 136

36W

### Specifications:

- Best surge protection for lamp safety
- Unique end-of-life protection circuit
- Intelligent auto cut-off @ 330 V for lamp safety

12NC	Description	MRP (₹)	Pack size
913712910814	Sumo Xtreme136 TLD	250	30



## Sumo LED Drivers

2W-4W, 5W-7W, 8W-10W, 11-15W, 16W-21W

### Specifications:

- Isolated design with 2 kV surge protection
- Optimized for Indian conditions
- Instant flicker-free start/long lasting
- Over-voltage protection with wide operating range surviving 320V@48 hours and 350V@2hrs

12NC	Description	MRP (₹)
929001469106	Sumo LED 2-4W	120
929001469206	Sumo LED 5-7W	150
929001478106	Sumo LED 8-10W	200
929001469406	Sumo LED 11-15W	250
929001469506	Sumo LED 16-21W	300

## Constant Voltage LED Drivers

Current available: 2A / 5A / 12.5A / 25A

### Specifications:

- High standards of safety
- Reliable, robust and versatile
- Short circuit and over voltage protection
- Compact size
- Class II (no need of earthing)
- Application – with LED Tape/Strips

12NC	Description	MRP (₹)
929002821406	LED Transformer 24W 2A 12VDC	350
929001417466	LED Transformer 60W 5A 12VDC	799
929003421606	LED Transformer 150W 12.5A	3000
929003413606	LED Transformer 300W 25A	4000



## EL Signage

36W

12NC	Description	Pack size
913712910814	EL Signage	30



## Micropower Electronic Ballast

For TL/PL-S/-T/-C lamps (India)

### Specifications:

- Compact, light weight, high frequency electronic ballast designed for TL (6-18W) and compact fluorescent PL (7-24W) lamps.

12NC	Description	MRP (₹)	Pack size
913702243012	EBS 114 230 SH	450	30
913702243112	EBS 118 230 SH	450	30





# Light that cares

Cleaner and odorless environment

**3** *in* **1** **illuminates**  
**Disinfects**  
**Deodorizes**



No harmful  
UV-C leakage<sup>A</sup>



Bright light  
1500 lumens

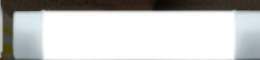


Easy to  
install



Control through  
wall switch toggle

UV-C Range



EyeComfort  
Technology<sup>®</sup>



## UV-C Desk Silver

24W

### Specifications:

- Easy and safe to use and disinfect
- Voice Alarm to indicate working status
- Microwave sensor detects moving objects
- 10 years working lifetime
- Equipped with Philips high quality UVC lamp
- Kills 99.99% hazardous germs, mites and virus
- No ozone emission
- Ideal for Living Room, Bedroom, Washroom, Kitchen

HSN Code: 929002477008

MRP: ₹14,999



## UV-C AirGuard Light

32W

(Light+Disinfection+Odor Removal)

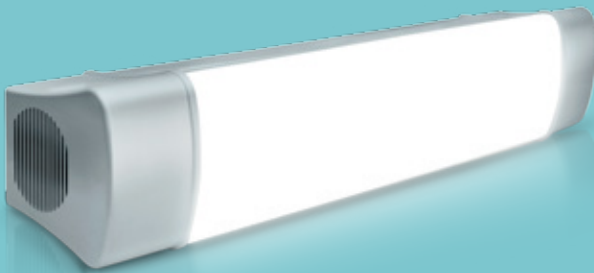
### Specifications:

- Disinfects in 30 Minutes
- Deodorizes in 60 Minutes
- Bright functional light
- No harmful UV leakage
- Dual Mode for easy operation and user control
- Ideal for Cabins, Shops, Living Rooms, Washrooms

HSN Code: 929002693901 - WW

929002694301 - CDL

MRP: ₹4,500



## UV-C Disinfection System

10L, 15L, 30L

### Specifications:

- Disinfect the products exposed to it
- Can be used in Homes/Retail/Offices conveniently within 2 to 8 minutes.
- Kills 99.99% germs
- Auto cut-off on sudden door opening while functioning
- Pre-set modes of 2, 5 or 8 minutes
- Standard timer of 3 minutes
- Ideal for Grocery, Milk Packets, Toys, Vegetables, Laptops

MRP: ₹8,990, ₹10,990, ₹12,990



HSN Code: 929002473813-10L

929002473913-15L

929002474013-30L

## UV-C Disinfection System 35L

### Specifications:

- Disinfect the products exposed to it
- Can be used in Homes/Retail/Offices conveniently within 2 to 8 minutes.
- Kills 99.99% germs
- Auto cut-off on sudden door opening while functioning
- Pre-set modes of 2, 5 or 8 minutes
- Standard timer of 3 minutes
- Ideal for Grocery, Milk Packets, Toys, Vegetables, Laptops

HSN Code: 929002474014

MRP: ₹15,000





